



DATA4PT

About the Project

Daria Kuzmina (UITP)
Anastasia Founta (ITxPT)
Emmanuel De Verdalle (ITxPT)



Intelligent Urban Transport Systems

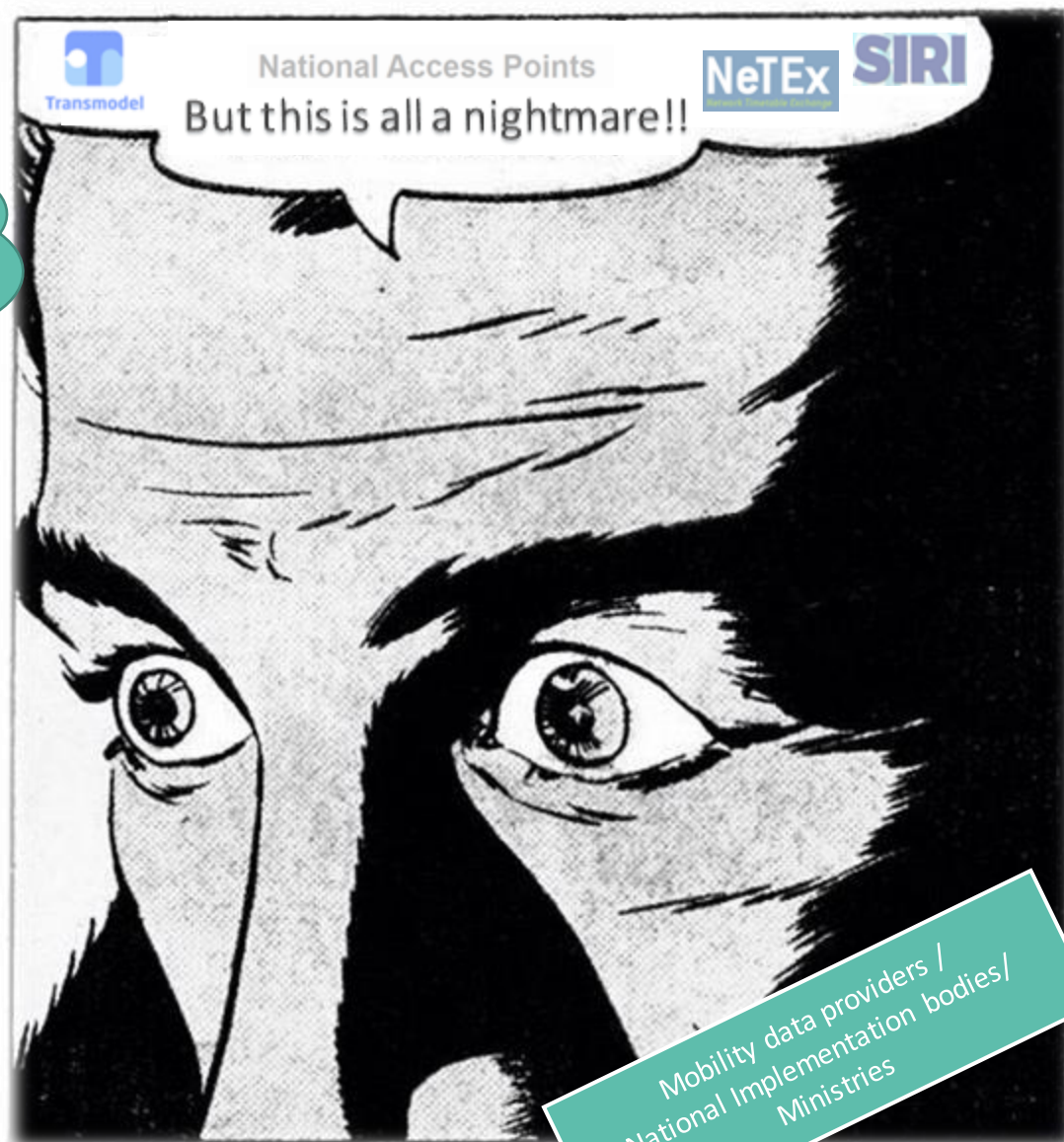
Data4PT has received funding from the European Union's DG for Mobility and Transport under grant agreement No MOVE/B4/SUB/2019-104/CEF/PSA/SI2.821136





Member States
need to implement
MMTIS Delegated
Regulation

Mobility data
providers need to
adopt EU Public
Transport Data
Standards

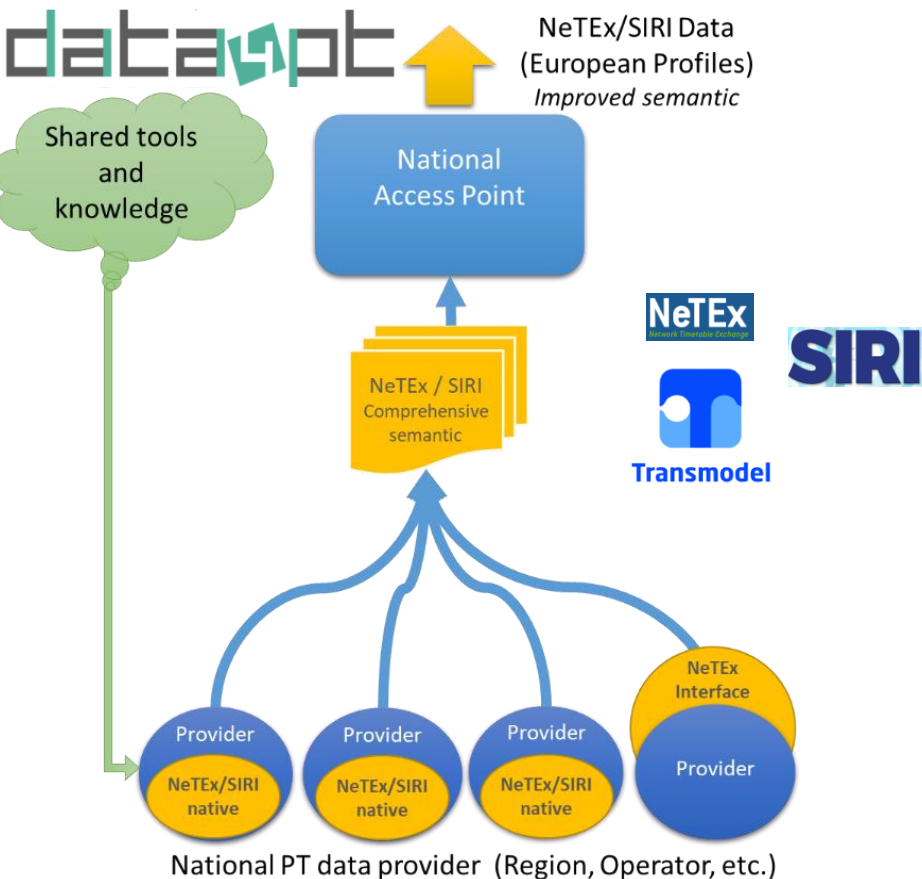
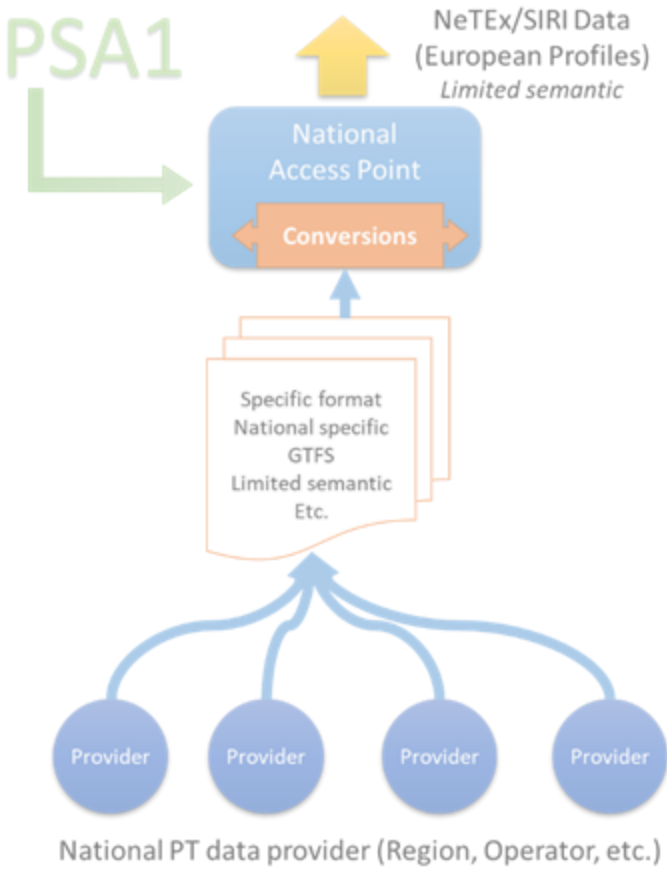


Mobility data providers /
National Implementation bodies/
Ministries



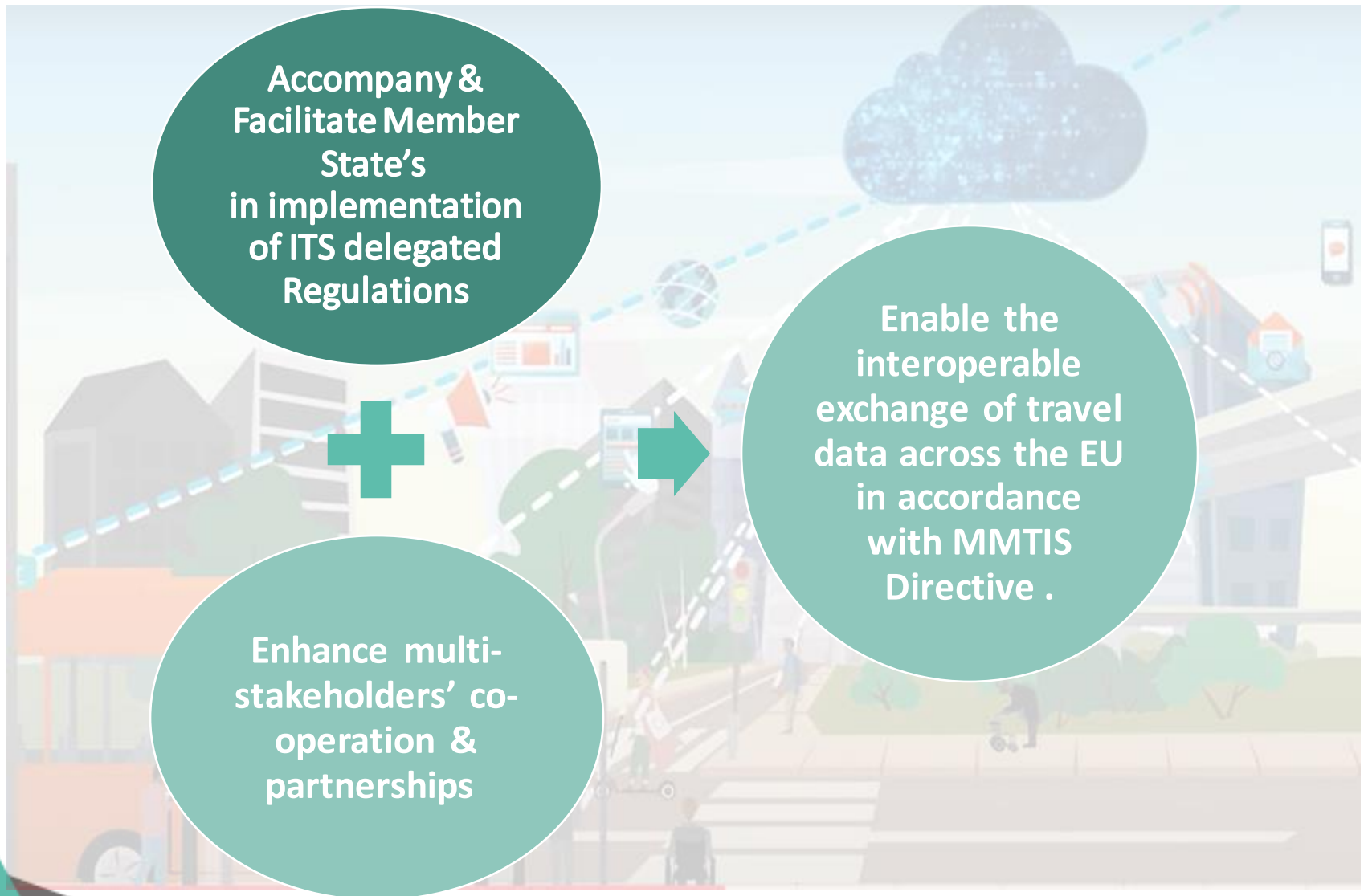
DATA4PT Scope

2020





Vision





Factsheet

Budget: 2,423,200 €

Funding: 1,998,560 €



Time span:

2020 – 2023 (4years duration)

Coordinator:



**Technical
Management:**



Partners:

Austria , Croatia, Czech Republic, France,
Denmark, Italy, Portugal, Slovenia,
Sweden



Observers:

Germany,UK, Netherlands, Norway,
Switzerland, Belgium, Ireland, Spain, Luxemburg, Poland,
Hungary, European Railways Agency
Shift2Rail Joint Undertaking





Moreover we build liaisons and collaborate with...



And more...

In order to achieve harmonisation in the domain of multimodal transport data



Data4PT provides support in different ways

Training

Knowledge base
Wiki page...



Technical support

Validation Tools



Exchange of
experiences and
best practices
Stakeholders' fora



Support beyond
project duration

Business model



data4pt



Trainings



More topics to come...

- NeTex alternative modes
- SIRI minimum profile insights
 - Data validation methods and tools



Knowledge Database

GUIDELINES

FAQ

- General questions
- Technical questions
- NeTeX
- SIRI
- Transmodel
- Opra

TRAINING MATERIAL

TOOLS

Guidelines on how to compare data standards and data formats

18/03/2021

The purpose of this paper is to describe how to formalise establishing comparisons between data models that contain at least some overlapping concepts. The concepts of an Entity Mapping and a Mapping Table are introduced. This paper is based on previous studies, in particular on "INSPIRE-MMTIS: overlap in standards related to the Delegated Regulation (EU) 2017/1926" (EU/JRC, 2019), on the experience presented in "Joint Working Group on the Harmonization of Parking related Information Standards" (2020) and on the comparison of the GTFS with Transmodel/NeTeX.

Read the report [here](#).

NeTeX European Passenger Information Profile (EPIP). The technical artefacts.

29/01/2021

Ideally all member states will provide NeTeX files according to the European Passenger Information Profile (EPIP) on their respective National Access Point. Data4PT provides some artefacts to simplify producing and quality assure such information. These artefacts can be used as basis for the specification on national profiles.

A graphic and interactive technical presentation of the adapted schema is available along with EPIP-adapted version of the full NeTeX XML schema and a relevant example.

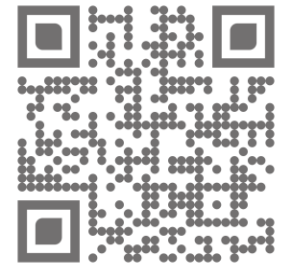
Follow the [link](#).





Technical Database

WIKI: data4pt.org



Main page

Public Transport models
National Access Points
Transmodel
SIRI
NeTEX

Support

FAQ
Support request
Top Contributors

Tools

What links here
Related changes
Special pages
Printable version
Permanent link
Page information
Cite this page

Main page **Discussion** Read View source View history Search

Main Page

Welcome to the DATA4PT Wiki.

- Simply want to **read**? You do **not** need to login. Browse the pages and enjoy!
- Would like to **comment** the available pages in the "Disc
- Do you want to **contribute** and create new pages? [Cor](#)

Please check the DATA4PT website [for](#) additional inform

Support
request



Main page

Public Transport models
National Access Points
Transmodel
SIRI
NeTEX

Support

FAQ
Support request
Top Contributors

Tools

What links here
Related changes
Special pages
Printable version
Permanent link

This page was last edited on 26 August 2021, at 16:20.

This page has been accessed 1,947 times.

[Privacy policy](#) [About DATA4PT Wiki](#) [Disclaimers](#)

Page **Discussion**

NeTEX

Contents [\[hide\]](#)

- 1 NeTex overview
- 2 NeTex-Light
- 3 NeTex EPIP
- 4 NeTex national and EU minimum profiles inventory
- 5 NeTex software / tools
 - 5.1 Conversion of NeTex between other formats
 - 5.2 Data Validation tools
 - 5.3 Language bindings and software development aids
 - 5.4 Editing /Management & visualisation tools for NeTex data
 - 5.5 NeTex data enabled
 - 5.6 Planning system supporting native NeTex export
- 6 NeTex Part 5 for New Modes
 - 6.1 Technical artefacts
 - 6.2 Canonical mapping with GBFS
- 7 References



Customised technical support

[ABOUT](#)[DATA MODELS](#)[CONSORTIUM](#)[TECHNICAL SUPPORT](#)[KNOWLEDGE BASE](#)[NEWS & EVENTS](#)[CONTACT US](#)

Technical requests

What kind of technical requests can you submit to the DATA4PT team?

Implementation support: related to "day to day" operation where DATA4PT related topics are implemented. It includes artefacts maintenance, standard use-cases, national profiles etc. Some examples are:

- ✓ *System interface specifications with operational system*
- ✓ *Support on NAP implementation*
- ✓ *SIRI support and bug report*
- ✓ *Question related to profile definition*
- ✓ *Use of NeTEx for ERP (accessibility of public places)*
- ✓ *Support for NeTEx implementation*

Tools: support for the use of existing tools or to build extra tools to support implementation. Some examples are:

- ✓ *How to use NeTEx/SIRI with MS Tools ?*
- ✓ *Question around the implementation for Chouette*

[SUBMIT A REQUEST](#)

Requirements

There might be additional requirements for you to be able to implement NeTEx, Transmodel and SIRI. The DATA4PT team is happy to provide you with additional tools such as:

Training: our expert team will assess any requirements for training events/webinars and training material development. These can be trainings on for example:

- ✓ *Explanation of the Transmodel Ecosystem*
- ✓ *General questions and questions about fares*

Public Transport Standards update: for example standards to include car-sharing, bike-sharing, mobility on demand... etc.

External exchanges: Our expert team will assess any requirements and consider proposing liaison exchange / dialogue with related bodies.

[SUBMIT A REQUIREMENT](#)

WEBSITE: data4pt-project.eu

SCAN ME

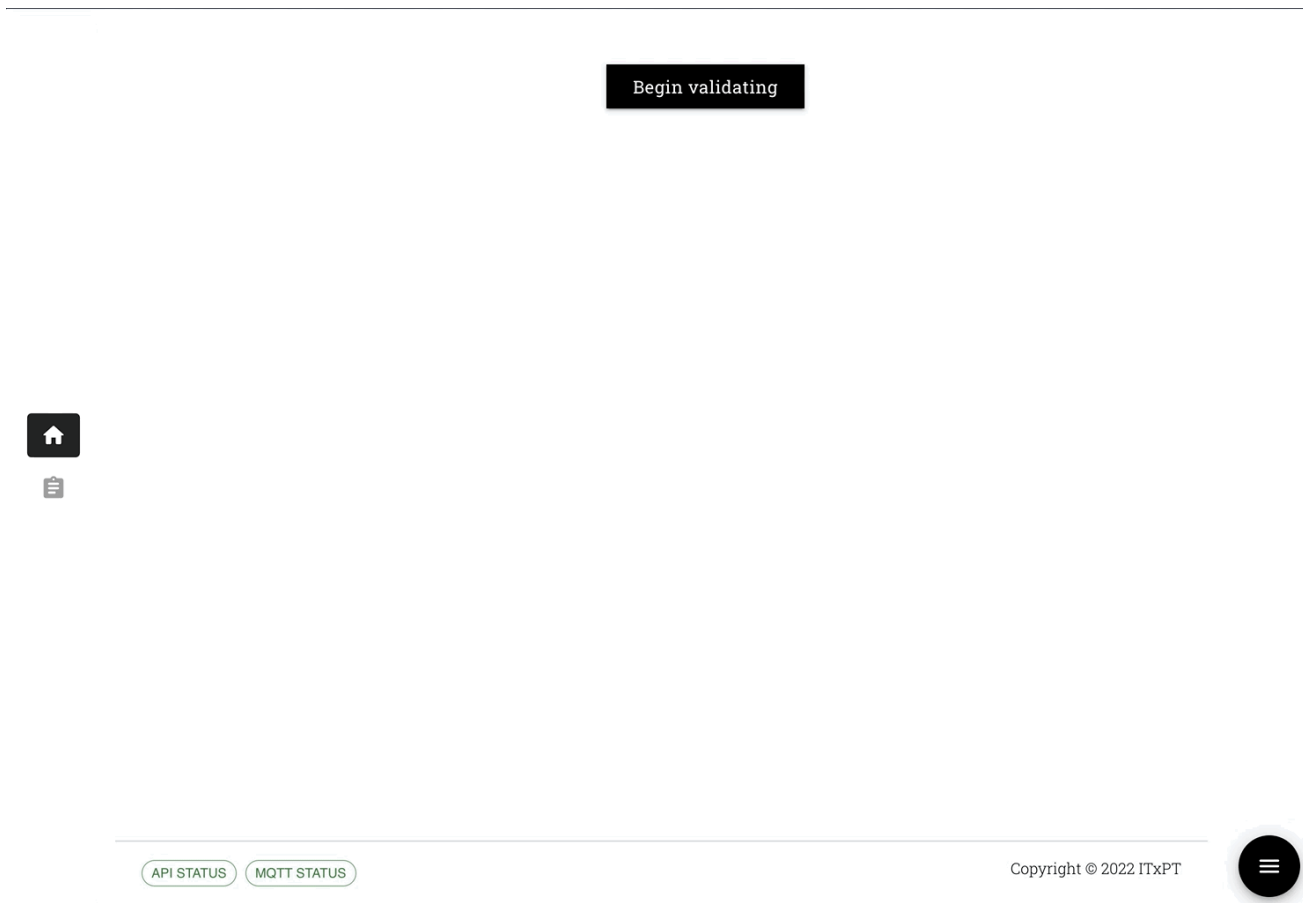


data4pt



Validation tools- NeTEx files

The online web interface in WIKI: data4pt.org

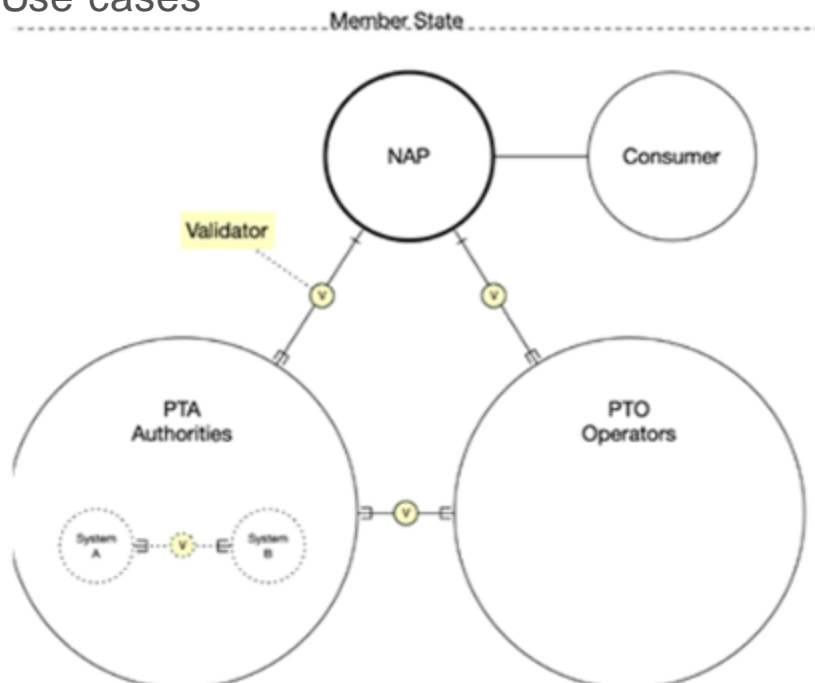


In GitHub: Soon with the full set of tools files, codes and the web interface to run locally

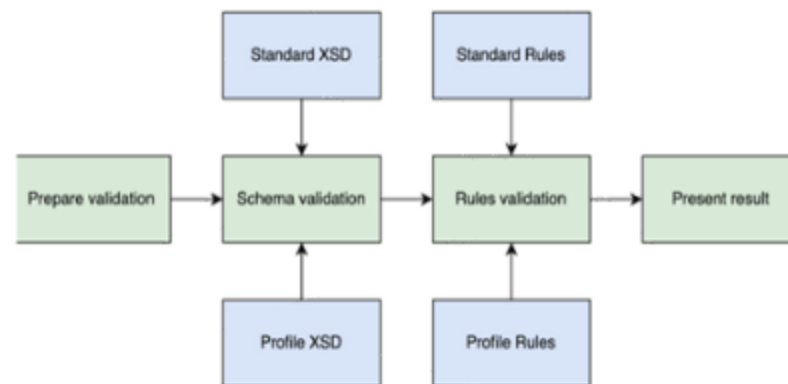


Validation tools

Use cases



Architecture



Shared
Open source
Configurable



EU minimum profiles

SIRI EU Real-Time Passenger Information Profile

CEN/TC XXX
Date: 20XX-XX
prEN XXXXX: XXXX
Secretariat: XXX

Public transport — Service interface for real-time information relating to public transport operations — Part 7: European Real-Time Passenger Information Profile

Einführendes Element — Haupt-Element — Ergänzendes Element
Élément introductif — Élément central — Élément complémentaire

ICS:

CCMC will prepare and attach the official title page.

NeTEx EU Passenger Information Accessibility Profile

CEN/TC 278
Date: 2022-03
prTS16614-6:2022
Secretariat: NEN

Public transport — Network and timetable exchange (NeTEx) — Part 6: European Passenger Information Accessibility Profile

Öffentlicher Verkehr — Netzwerk- und Fahrplan Austausch (NeTEx) — Teil 6: Europäisches Profil für barrierefreie Fahrgastinformation

Transport Public — Echanges des informations planifiées (NeTEx) — Partie 6: Profil Européen d'Information Voyageur pour l'Accessibilité

ICS:

CCMC will prepare and attach the official title page.



Transmodel family standards update proposal



Deliverable D3.4 Standards updates proposal



Deliverable 3.4 – Standards updates proposal



Version 2.0 – 28/02/2022

Table of Contents

Deliverable 3.4- Standards update proposal (M24)	3
Executive Summary	5
1 Introduction	12
1.1 Trade-offs and Bigger Questions	12
1.2 Conceptual Levels	12
1.3 Drivers of change	13
1.3.1 Source of new requirements for function	13
1.3.2 Granularity of new requirements	14
1.4 Nature of changes	14
1.4.1 Gaps in Profiles	15
1.5 Processes	15
2 Initial Roundup of gaps & other possible changes	16
3 Transmodel	17
3.1 Functional gaps and potential extensions	17
3.1.1 Seating Plan/ Seat Allocation submodel	17
3.1.2 Vehicle door submodel	17
3.1.3 Power / Vehicle Charging Plan submodel	17
3.1.4 Check in / Check out times	17
3.1.5 Dated Vehicle Journey Identification	17
3.1.6 New Mode Passenger Information Queries	18
3.2 Documentation improvements to Transmodel Specification	18
3.2.1 Consolidation of CEN Specification extensions from annexes	18
3.3 Technology Gaps in the Transmodel support	18
4 NeTEx	19
4.1 Functional Gaps in the NeTEx Model requiring TM model	19
4.2 Practical Ticket Types	19
4.3 Functional Gaps in the NeTEx Model already in TM model	19
4.3.1 Control and validation data	19
4.3.2 Implement Roles	19
4.3.3 Fully Self describing Customer Purchase Package	19
4.4 Specific CRs for small features additions to NeTEx	19
4.5 Documentation improvements to NeTEx Specification	20
4.5.1 Update of NeTEx	20
4.5.2 Remodularisation of CEN Specification documents	20
4.5.3 Lack of simple online specification NeTEx	20
4.6 Technology Gaps in the NeTEx Model	20



Data4PT has received funding from the European Union's DG for Mobility and Transport under grant agreement No MOVE/B4/SUB/2019-104/CEF/PSA/SI2.821136





Stakeholders' forum



ABOUT ▾ DATA MODELS TECHNICAL SUPPORT KNOWLEDGE BASE LIBRARY
NEWS & EVENTS **CONTACT US**

DATA4PT gathers EU Member States & public transport sector for first successful Stakeholder Workshop

On 5 November 2020, the DATA4PT project organised its first Stakeholder Workshop. Gathering over 70 participants including EU Member States, PTOs, PTAs and the industry, the Workshop provided a very fruitful platform for different actors in public transport to discuss how data standards Transmodel, NeTEx and SIRI – and the DATA4PT project – can improve multimodal information services across the European Union. In this wrap-up report we discuss some of the questions asked by the audience about how to adopt and implement data standards to improve services.

You can find all speakers' presentations in the [DATA4PT Library](#).

The Workshop was opened by Umberto Guida, Senior Director K&I at UITP, who highlighted the essential role of data in the digital transformation the public transport sector is currently undergoing. After, the stage was for Victoire Champenois from the European Commission's Mobility and Transport Unit (DG MOVE). In her presentation, she spoke about the need



ABOUT ▾ DATA MODELS TECHNICAL SUPPORT KNOWLEDGE BASE LIBRARY
NEWS & EVENTS **CONTACT US**

DATA4PT 2nd Stakeholders Forum explored the new Multi-Modal Travel Information Services legislation

On 13 December, the DATA4PT team organised online the Stakeholder's Forum: "MMTIS Revision – Overcoming challenges, creating new opportunities" presenting the new MMTIS (Multi-Modal Travel Information Services) legislation.

The Forum focused on informing about the next steps on the MMTIS legislation and the standardisation work that is related to it. The aim of this event was to collect feedback around the legislation and the expectations of national entities responsible for MMTIS implementation and various stakeholders in the mobility ecosystem. Regarding the latter, those stakeholders and especially the data providers were informed about the goals of MMTIS and saw the wider context on which they are asked to provide their data. The DATA4PT team hopes that the Forum helped to better understand the requirements relevant to their role in the implementation of the regulations.

The speakers presented the following topics:



3rd Stakeholders Forum coming soon...



Outcomes

- ✓ PT Operators, NAPs nominated bodies & other relevant stakeholders confident in creating and sharing standardised data
- ✓ Optimisation of data flow from data producers to consumers
- ✓ Accessible and useful NAPs with quality data across EU
- ✓ Post project sustainable support





Thank you for your attention!



@Data4PT



data4pt-project

<https://data4pt-project.eu/>
daria.kuzmina@uitp.org
anastasia.founta@itxpt.org
emmanuel.de-verdalle@itxpt.org

